

2022 -2023

Final Term Test

Duration: 1h00

Name:

3<sup>rd</sup> Year:

## Pollution

Nowadays, there are many environmental problems, mainly due to pollution. It is the contamination of air, water and soil by harmful substances that affect human health and quality of life.

Industries, engines and cars emitting toxic gases and fumes are the main causes of air pollution. As a result, many people suffer from respiratory problems such as asthma.

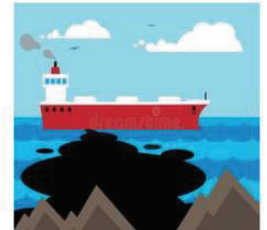
The water is also polluted by millions of tons of waste from households and industries, including oil spills from ships that lead to the death of marine life.

It is up to us to stop damaging the environment. We must fight pollution everywhere!

### PART ONE

#### A/ Reading comprehension: (7 pts)

1. Label the following pictures with the right words from the text: (2pts)



2. Complete the table below from the text: (3pts)

Types of pollution	Causes

3. Read the text then write ABCD to match each word to its corresponding **Synonym**: (2pts)

Words		Synonyms
1. Due to	.....	a. Killing
2. As a result	.....	b. Releasing
3. Damaging	.....	c. Because of
4. Emitting	.....	d. Therefore

**B/ Mastery of language: (7 pts)**

1. Complete the sentences the sentences with **Should/Shouldn't-Must/Mustn't**: (1pt)

- \* We .....turn off the light when we classroom.
- \* We..... drop litter in the ground

2. Rewrite in **Imperative Form** the sentences in exercise 1: (1pt)

- \* .....
- \* .....

3. Complete with **Therefore/ Because**:

- \* He played with rubbish..... He suffers from skin rash.
- \* People have stomach ache..... they eat contaminated food.

4. Write the **Silent Letters** of the following words in the boxes:

- \* Chemical  which  fight  asthma

**Part II : Situation of integration (6pts)**

You are a member of a green club and want to do something for your school environment. Make a poster with (6) **must-do -orders** to raise awareness among you schoolmates.

**DON'T BE A LITTERBUG**



1. ....
2. ....
3. ....
4. ....
5. ....
6. ....

